

Commission on Health Care Facilities in the 21st Century

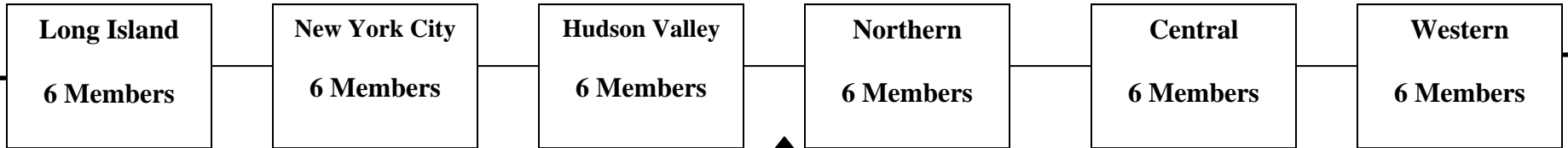
18 Statewide Commission Members

Statewide Commission members will vote on all issues before the Commission



36 Regional Commission Members

There are six regional members of the commission for each of the six regions. Regional members shall vote and be counted for quorum purposes only when the commission is acting on recommendations relating solely to the regional members' respective region.



72 Regional Advisory Committee (RAC) Members

Each region's RAC shall develop non-binding recommendations for reconfiguring its region's hospital and nursing home bed supply to align bed supply with regional and local needs.

