



# The 21st Century Commission

---

January 12, 2006



# Where New York Is Today

---

- Medicaid supported programs:
  - Long Term Home Health Care Program
  - Personal care services
  - Certified Home Health Agency services
  - Private duty nursing
  - Traumatic Brain Injury Waiver
  - Managed long term care
  - Program for All Inclusive Care for the Elderly (PACE)

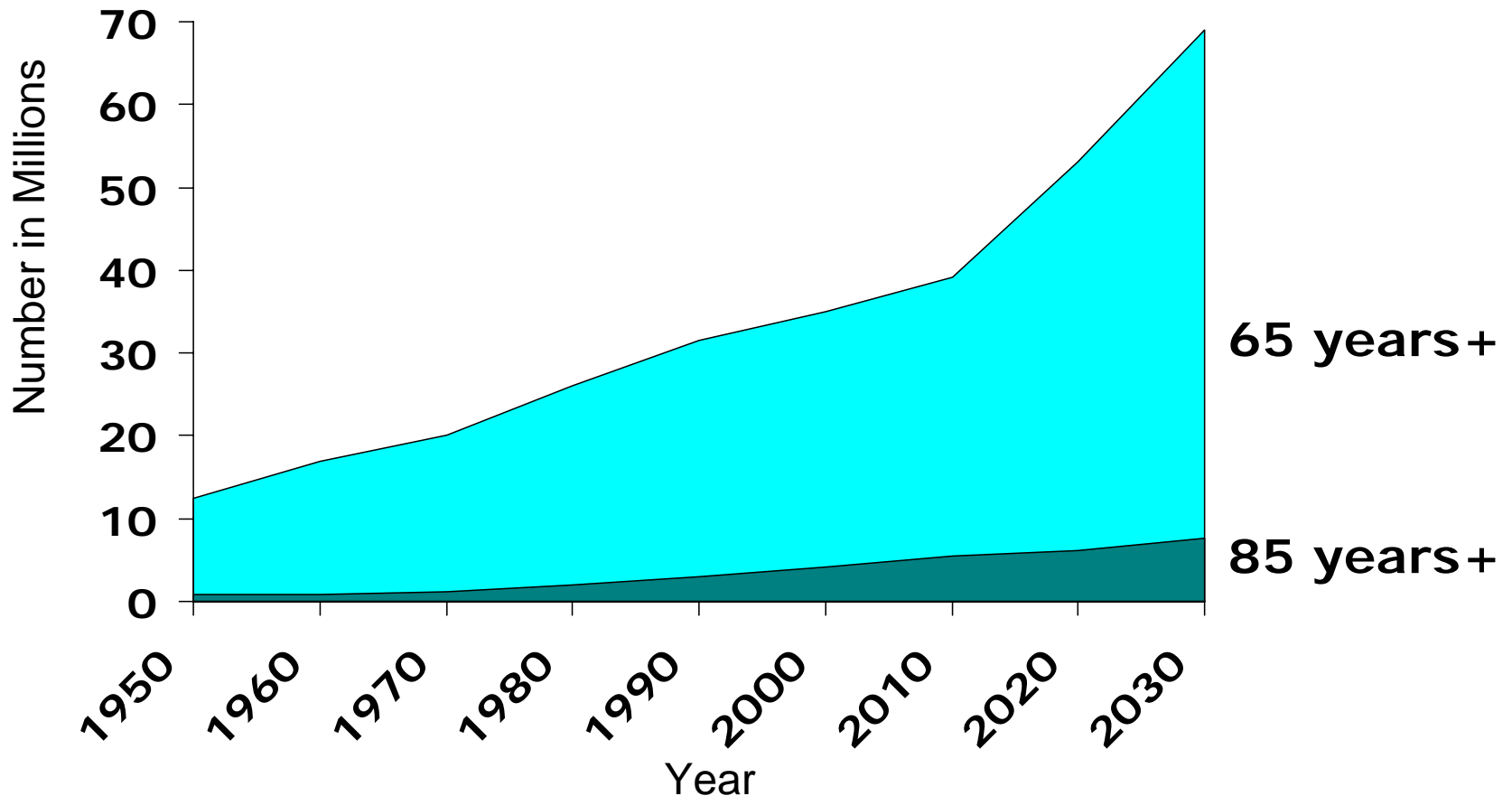
# Where New York Is Today

(continued)

---

- Federal Real Choice Grants
- 2005 Long Term Care Demonstrations
- Non-Medicaid programs:
  - Expanded In-home Services for the Elderly
  - Community Services for the Elderly
  - Home-delivered meals
  - Independent Living programs
- Olmstead

# The Graying of America: 65+ Population 1950-2030





# New York's Long Term Care Vision

---

- Accessible, coordinated and person-centered
- Support self-determination and promote personal responsibility
- Provide high quality care and services that meet consumer needs
- Ensure accountability, efficiency and affordability



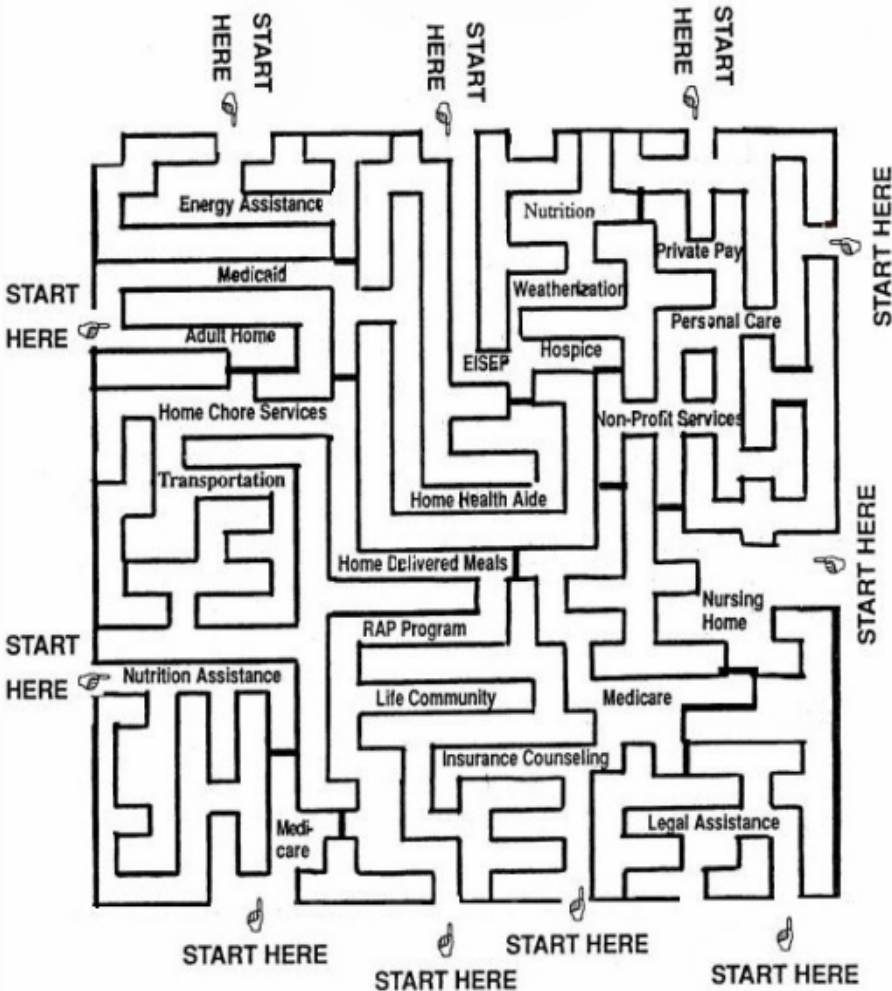
# Governor's LTC Work Group Recommendations

---

- Point of Entry
- MA Waiver: Integrated Approach to LTC System
- Medicaid Eligibility Reform
- Long Term Care Insurance
- Nursing Home Innovation

# Local Long Term Care System Current Organizational Structure

Consumers  
and  
Caregivers



# Results of A Non-System

## Costly

- Prime determinate of service – where you enter
- Duplicative
  - Assessment & Case Management

## Lack of Responsibility

- Customer outcomes
- System performance

## Fragmented & Confusing

## Unsustainable

- Demographics - \$ & Hands
  - Increasing # of eligibles & decreasing workforce







# Access to Long Term Care Services Can Be Improved

---

- HOW?
  - Establish **Point of Entry (POE) System**

# Recommendations of Governor Pataki's Health Care Reform Workgroup

- Comprehensive and unbiased information and assistance in all services and supports
- Screening - social and medical needs; financial status; available service options, regardless of payer source
- Comprehensive needs assessment



# ***Recommendations of Governor Pataki's Health Care Reform Workgroup***

- Service/care coordination
- Public education
  - Promote planning, promote personal choice
  - Prepare financially
- Interdisciplinary team approach



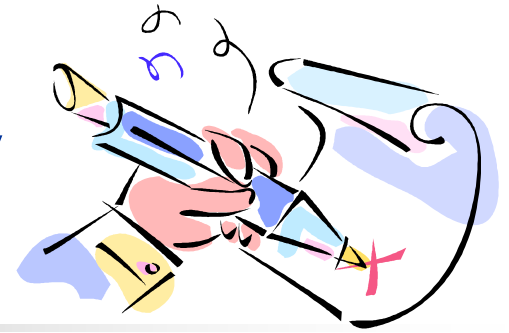


# Qualities of NYS POE

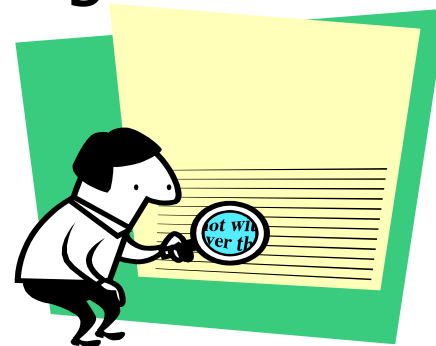
---

- **All**
- Age or disability
- Trusted resource
- Connected with their community
- Place (within the community)
- Consumers, caregivers, professionals
- Reliable, impartial information

# Accountability



- Consistent and unbiased program throughout the entire state
  - Contractually obligate local POE
  - Statewide contractor for IT platform
  - Statewide contractor or contractors will provide program monitoring and training of Point of Entry entities



# POE Contract

- Local government – right of first refusal
- Not-for-profit
- ? (Other model)





# IT Contract

---

- Information Technology Central
- Web based system
- HIPAA compliant
- Customer access (local & long distance)
  - Data entry
  - Communication
  - Information acquisition, personal education
- Work toward integrated care

# MONITORING AND TRAINING CONTRACT

- Monitor performance of qualified responders
- Develop training curricula components





# No Change, But Change

- No change: 2 existing assessment requirements will continue:
  - ✓ Those qualifying for publicly financed long term care services;
  - ✓ Consumers seeking nursing home placement, regardless of payer source;
- Change: POE, in Phase II, will assume the assessment functions



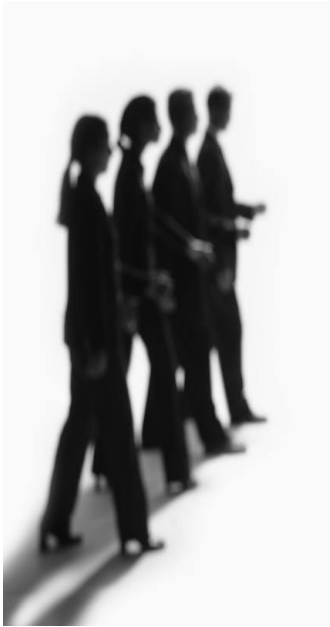
# Phase I

- Statewide Roll Out
- Information and Assistance
- Screening (consisting of a preliminary evaluation of the consumer and their caregiver's general social, medical and financial needs to identify available service options and choices)



# NYSOFA & DOH

- **Jointly work on:**
  - Standards
  - Requirements
  - Program outcomes
  - Performance measures
- **In preparation for:**
  - RFA for POE Entities
  - RFP for IT
  - RFP for Staff Training
  - RFP for Monitoring, Evaluation, Quality Assurance



# Tentative Timeline – Phase I

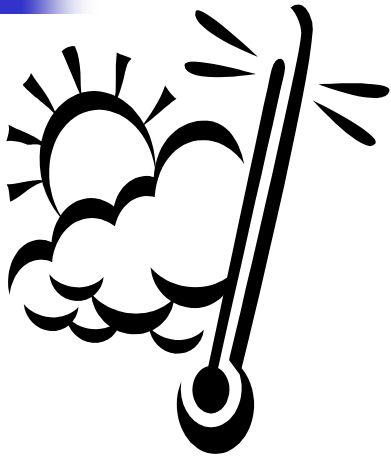


- NYSOFA/DOH develop standards, performance measures for Phase I POE and IT Contracts ([winter/spring '06](#))



- Issue RFA/RFP ([spring '06](#))
- RFA to Counties
- IT Contract
- Develop Training RFP

# Tentative Timeline – Phase I



(Summer 2006)

- RFA's reviewed
- If needed, RFP issued in any county "passing"
- Notice of county awards
- Issue training contract

# PHASE I

(Fall/Early Winter 2006)

- Implement POE's
- Build IT platform
- Monitoring & evaluation RFP developed





# Phase II

---

- Bring on-line fully functioning POE
  - Comprehensive Needs Assessment
  - Service Coordination
- Simultaneous with Phase I implementation
  - NYSOFA & DOH develop standards, requirements, expected outcome measures

# STAKEHOLDER CONCERNS ABOUT POE

- Delays:
  - Completing assessments
  - Establishing eligibility
  - Hospital discharges
  - Nursing home admissions
  - Start of home care services
- Funding and Resources





# Improve the Delivery of Services to Long Term Care Consumers



---

## ■ Key Issues

- Inequities in the types/levels of services provided
- Medicaid State Plan emphasis on medical model
- Inflexibility for consumers and administrators

## ■ Recommendations

- An integrated long term care Medicaid program using a single waiver
- **First step: NHTD waiver**

# Nursing Home Transition and Diversion Waiver



---

- RFI issued April 2005
- Applied for CMS waiver in December 2005
- RFI, Summary of responses and CMS waiver application posted on web:

<http://www.health.state.ny.us/>

(Click Health Care Reform Working Group tab)

# Nursing Home Transition and Diversion Waiver



---

- 2004 enacted legislation will increase opportunities for community-based care.
- DOH worked with consumers, providers and local government representatives to design and implement this initiative.
- December 2005 - DOH requested a Federal CMS waiver to provide community-based services not included in the traditional Medicaid program.



# Nursing Home Transition Waiver

---

- Eligible individuals may include those who are:
  - At least 18 years of age;
  - Eligible for or in receipt of Medicaid;
  - In a nursing home/need skilled nursing care;
  - Capable of residing in the community
  - Full range of State Plan Services + Waiver Services
  - Statewide aggregate cost cap—not to exceed the cost of nursing home care



# Restructuring Long Term Care in NYS: What we know so far...

---

- Pursue HCSB 1115 waiver
- Waiver will “fold in” existing DOH waiver programs with Medicaid LTC State Plan services
- Federal funding for non-Medicaid services (e.g. EISEP, Meals on Wheels) for higher income recipients
- Maintain cost neutrality



# Restructuring Long Term Care in NYS: What we know so far...

---

- Eligibility:
  - Persons of all ages
  - Close eligibility loopholes
  - Provide options to increase personal responsibility: Partnership for Long Term Care



# Restructuring Long Term Care in NYS: What we know so far...

---

- Services will include:
  - All Medicaid LTC State Plan services
  - All services included in existing DOH waivers:
    - Care at Home,
    - Long Term Care Home Health Care,
    - TBI, and
    - Nursing Home Transition and Diversion
  - Additional services may be included



# Follow Progress on NYSOFA and DOH Websites

---

- Governor's Health Care Reform Working Group "Interim Report"
- POE RFI and Response Summary
- NHTD RFA and CMS Waiver Application

<http://www.aging.state.ny.us/explore>

<http://www.health.state.ny.us>

(Click Long Term Care and Health Care Reform Working Group Tabs)